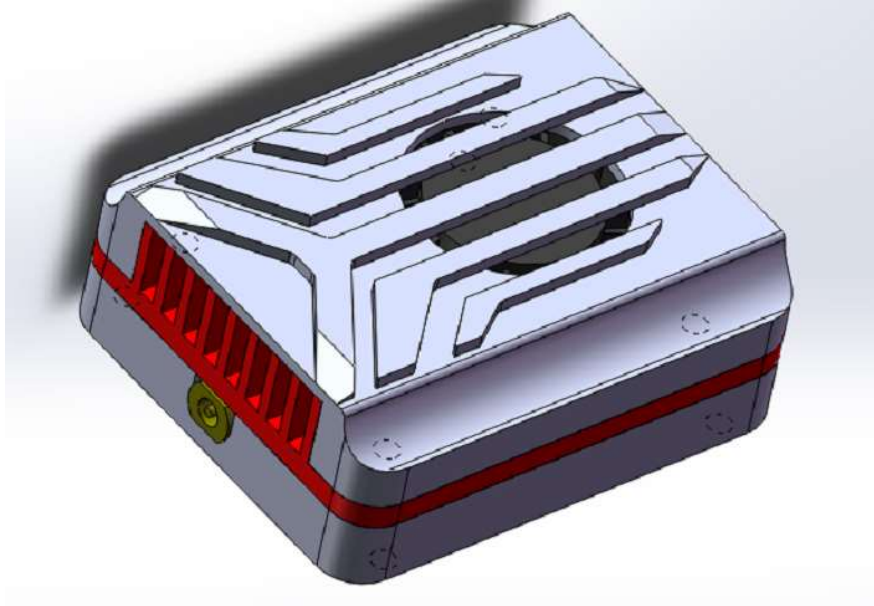
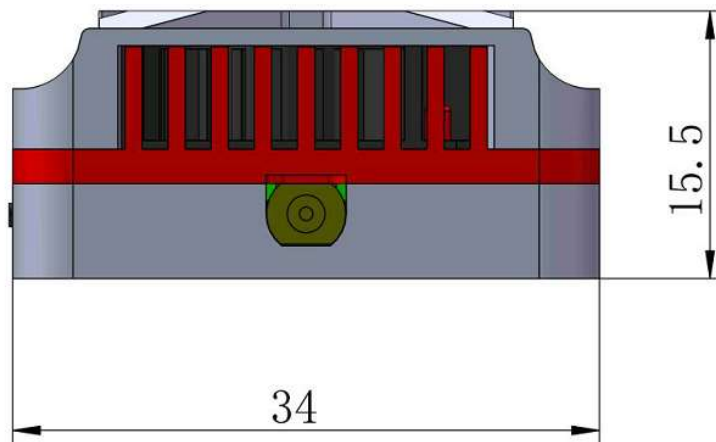


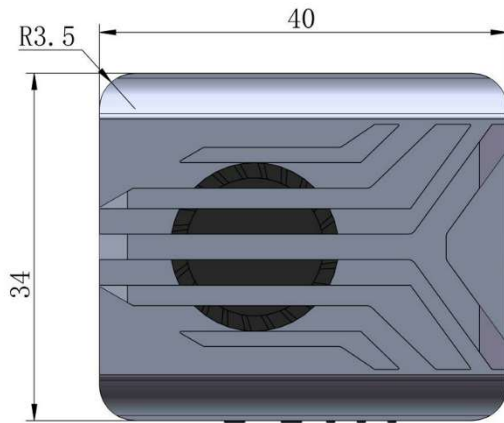
## 4.9-6GHz 3W 4W Transmitter Module User Manual (TX)

### 1. Product Appearance



### 2. Product Dimensions





### 3. Performance and Parameters: (General Characteristics )

Item (Item )	Specification (SPEC. )
Supply Voltage (Supply Voltage )	<b>7-36V</b>
Frequency Band (Frequency band )	<b>4900~6000MHz</b>
Number of channels (Channel customer )	<b>64CH</b> ( see channel table)
Frequency group (Frequency Band )	<b>8</b> groups (see channel table)
Power levels (Power Level)	<b>0.1W/ 0.5W / 1W / 2W/ 3W / 4W</b>
Operating temperature (Operating Temperature )	<b>-10℃~+60℃</b>
Dimensions (Profile dimension )	40mm × 34mm × 15.5mm
Weight (Weight)	<b>Approx.: 32g</b>

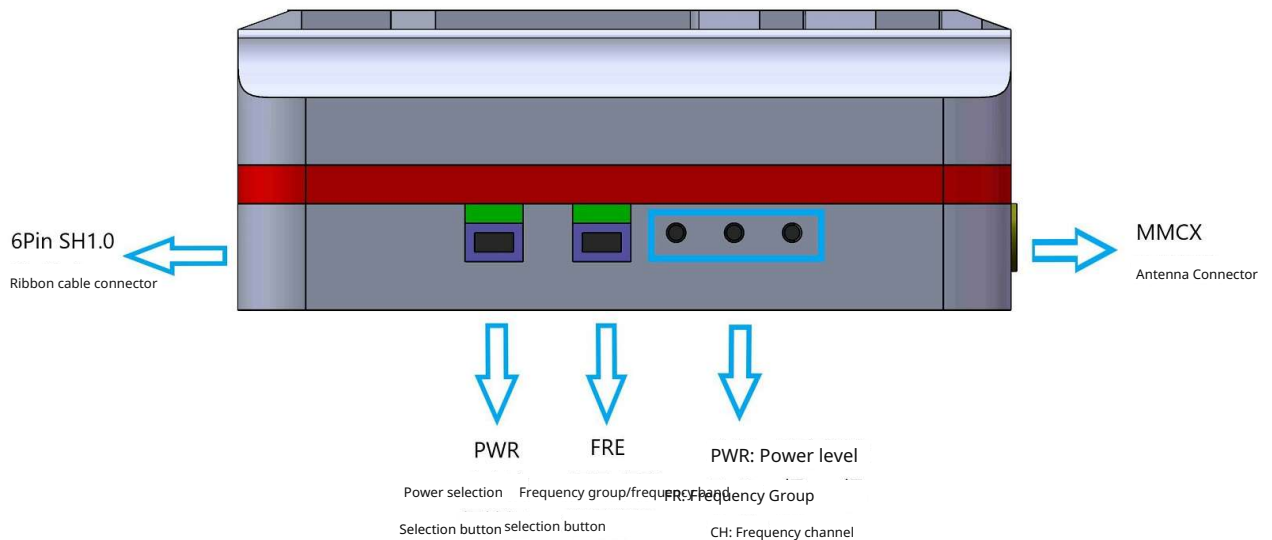
### 4. CHANNEL TABLE

Video Transmitter Table										
		8 Band Quantity		8 Channels per Band						
Name	Letter	1	2	3	4	5	6	7	8	
BOSCAM_A	A	5865	5845	5825	5805	5785	5765	5745	5725	Band 1
BOSCAM_B	B	5733	5752	5771	5790	5809	5828	5847	5866	Band 2
BOSCAM_E	E	5705	5685	5665	5645	5885	5905	5925	5945	Band 3
FATSHARK	F	5740	5760	5780	5800	5820	5840	5860	5880	Band 4
RACEBAND	R	5658	5695	5732	5769	5806	5843	5880	5917	Band 5
RACEBAND	O	5474	5492	5510	5528	5546	5564	5582	5600	Band 6
LOWRACE	D	5362	5399	5436	5473	5510	5547	5584	5621	Band 7
LOWRACE	X	4990	5020	5050	5080	5110	5140	5170	5200	Band 8

## 5. RF Output Characteristics: (RF Characteristics )

Power level	1	2	3	4	5
Power	0.1W	0.5W	1W	2W	3W

## 6. Pin Definition and Distribution (Pin Assignment )



PWR LED: Indicates power level; status shown in red

FR LED: Indicates the frequency group count; status: blue

CH LED: Indicates the channel; status: green

PWR: Power selection button

FRE: Frequency group and channel selection button

MMCX antenna connector

6P SH1.0 ribbon cable connector

## 7. Button Control Method and LED Indicator Definitions

- The FRE button is the channel and frequency-group switching button; by default, each short press of the FRE button switches to the next channel, and the corresponding green LED will flash, indicating the channels CH1, 2, 3, 4, 5, 6, 7, 8. This operation cycles, and the LED will flash cyclically every 3 seconds to indicate the current channel; see the figure below!

Short press the FRE button to switch channels								
Green LED	CH1	CH2	CH3	CH4	CH5	CH6	CH7	CH8
	Blinks once	Blink twice	Blinks 3 times	Blinks 4 times	Blinks 5 times	Blinks 6 times	Blinks 7 times	Blinks 8 times

- Each long press of the FRE button for 3 seconds switches to the next frequency group, and the corresponding blue LED will flash, indicating the frequency groups A, B, E, F, R, O, L, X, J in sequence. This operation cycles, and the LED will flash cyclically every 3 seconds to indicate the current frequency group; see the figure below!

Long-press the FRE button to switch frequency-group mode								
Blue LED	A	B	E	F	R	O	L	X
	Blinks once	Blink twice	Blinks 3 times	Blinks 4 times	Blinks 5 times	Blinks 6 times	Blinks 7 times	Blinks 8 times

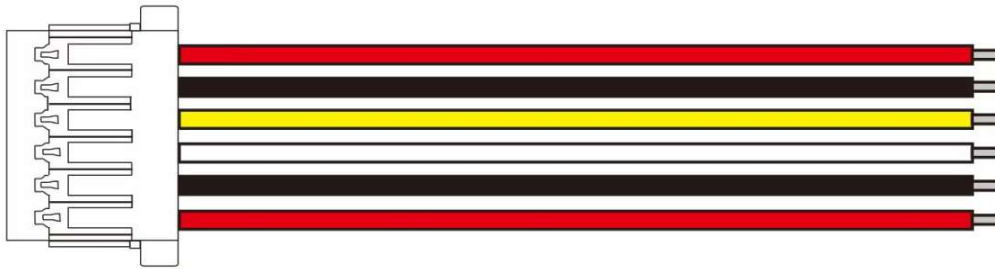
- The PWR button is the power adjustment button; each short press switches the power by one level, and the corresponding red LED will flash to indicate the change. The power levels are 0.1W, 0.5W, 1W, 2W, and 3W. This button operation cycles, and the corresponding red LED will flash cyclically every 3 seconds to indicate the current power level.

Short press the PWR button to toggle the power level					
Red LED	0.1W	0.5W	1W	2W	3W
	Blinks once	Blink twice	Blinks 3 times	Blinks 4 times	Blinks 5 times

## 8. 6P SH1.0 Interface Definition

Serial number	1	2	3	4	5	6
Function	7-36V	GND	IRC	VIDEO	GND	+5V
Color	Red	Black	White	Yellow	Black	Red

SH1.0-6P



## 9. Precautions for Use:

1. Module overheat protection activates, reducing power transmission and possibly shutting off power transmission entirely.
2. It is recommended before connecting power to ensure the voltage is within the correct range and the positive and negative poles are correct to avoid damaging components.
3. It is recommended before connecting power to confirm that an antenna is installed on the RF output port; this can extend the module's service life.
4. Please read the manual before use; this will allow correct wiring and extend the module's service life.