

SPEC

Spec No.	Q-DS-1-S094-00
Date	2022.05.20

TYPE : TCG084XGLAAPNN-AN00-S

< 8.4 inch XGA transmissive color TFT with LED backlight >

CONTENTS

1. Application
2. Construction and outline
3. Mechanical specifications
4. Absolute maximum ratings
5. Electrical characteristics
6. Optical characteristics
7. Interface signals
8. Input timing characteristics
9. Backlight characteristics
10. Lot number identification
11. Warranty
12. Precautions for use
13. Reliability test data
14. Outline drawing



KYOCERA CORPORATION
DONGGUAN SHILONG KYOCERA Co., Ltd.
DISPLAY DIVISION

This specification is subject to change without notice.
Consult Kyocera before ordering.

Original Issue Date	Designed by: Engineering dept.			Confirmed by: QA dept.	
	Prepared	Checked	Approved	Checked	Approved
2022.05.20	Zheng Chuhao	Liang Shaojin Yamazaki	Shibano	Wang Wei	Chen Zhihua Suyama

Warning

1. This Kyocera LCD module has been specifically designed for use only in electronic devices and industrial machines in the area of audio control, office automation, industrial control, home appliances, etc. The module should not be used in applications where the highest level of safety and reliability are required and module failure or malfunction of such module results in physical harm or loss of life, as well as enormous damage or loss. Such fields of applications include, without limitation, medical, aerospace, communications infrastructure, atomic energy control. Kyocera expressly disclaims any and all liability resulting in any way to the use of the module in such applications
2. Customer agrees to indemnify, defend and hold Kyocera harmless from and against any and all actions, claims, damages, liabilities, awards, costs, and expenses, including legal expenses, resulting from or arising out of Customer's use, or sale for use, or Kyocera modules in applications.

Caution

1. Kyocera shall have the right, which Customer hereby acknowledges, to immediately scrap or destroy tooling for Kyocera modules for which no Purchase Orders have been received from the Customer in a two-year period.

Revision record

Date		Designed by : Engineering dept.			Confirmed by : QA dept.	
		Prepared	Checked	Approved	Checked	Approved
Rev. No.	Date	Page	Descriptions			

1. Application

This document defines the specification of TCG084XGLAAPNN-AN00-S. (RoHS Compliant)

2. Construction and outline

LCD	: Transmissive color dot matrix type TFT
Backlight system	: LED
Polarizer	: Anti-Glare treatment
Interface	: LVDS
Additional circuit	: Timing controller, Power supply (3.3V input) Without constant current circuit for LED Backlight.

3. Mechanical specifications

Item	Specification	Unit
Outline dimensions 1)	199.5(W)×149 (H)×10.5(D)	mm
Active area	170.8 (W)×128.1 (H) (21.3cm/8.4inch(Diagonal))	mm
Dot format	1,024×(B,G,R)(W)×768(H)	dot
Dot pitch	(0.1668)(W)×(0.1668)(H)	mm
Base color 2)	Normally Black	-
Mass	313	g

1) Projection not included. Please refer to outline for details.

2) Due to the characteristics of the LCD material, the color varies with environmental temperature.

4. Absolute maximum ratings

4-1. Electrical absolute maximum ratings

Item		Symbol	Min.	Max.	Unit
Supply voltage(+3.3V)		VDD	-0.5	5.0	V
Input signal Voltage 1)	RxINi+, RxINi- (i=0,1,2,3)	V _{I1}	-0.3	V _{DD} +0.3	V
	CK IN+, CK IN-	V _{I2}	-0.3	V _{DD} +0.3	V
	MODE, SC	V _{I3}	-0.3	V _{DD} +0.3	V

- 1) V_{DD} must be supplied correctly within the range described in 5-1.

4-2. Environmental absolute maximum ratings

Item		Symbol	Min.	Max.	Unit
Operating temperature (Ambient)	1)	T _{OP} (Ambient)	-30	80	°C
Operating temperature (Panel)	2)	T _{OP} (Panel)	-30	80	°C
Storage temperature	3)	T _{STO}	-30	80	°C
Operating humidity	4)	H _{OP}	10	5)	%RH
Storage humidity	4)	H _{STO}	10	5)	%RH
Vibration		-	6)	6)	-
Shock		-	7)	7)	-

- 1) Operating temperature means a temperature which operation shall be guaranteed. Since display performance is evaluated at 25°C, another temperature range should be confirmed.
2) Panel surface temperature (all the surface).
3) Temp. = -30°C < 48h, Temp. = 80°C < 168h

Store LCD at normal temperature/humidity. Keep them free from vibration and shock.
An LCD that is kept at a low or a high temperature for a long time can be defective due to other conditions, even if the low or high temperature satisfies the standard.
(Please refer to “Precautions for Use” for details.)

- 4) Non-condensing
5) Temp. ≤ 40°C, 85%RH Max.

Temp. > 40°C, Absolute humidity shall be less than 85%RH at 40°C.

6)

Frequency	10~55 Hz	Acceleration value (0.3~9 m/s ²)
Vibration width	0.15mm	
Interval	10-55-10 Hz	1 minutes

2 hours in each direction X, Y, Z (6 hours total)

EIAJ ED-2531

- 7) Acceleration: 490 m/s², Pulse width: 11 ms
3 times in each direction: ±X, ±Y, ±Z
EIAJ ED-2531

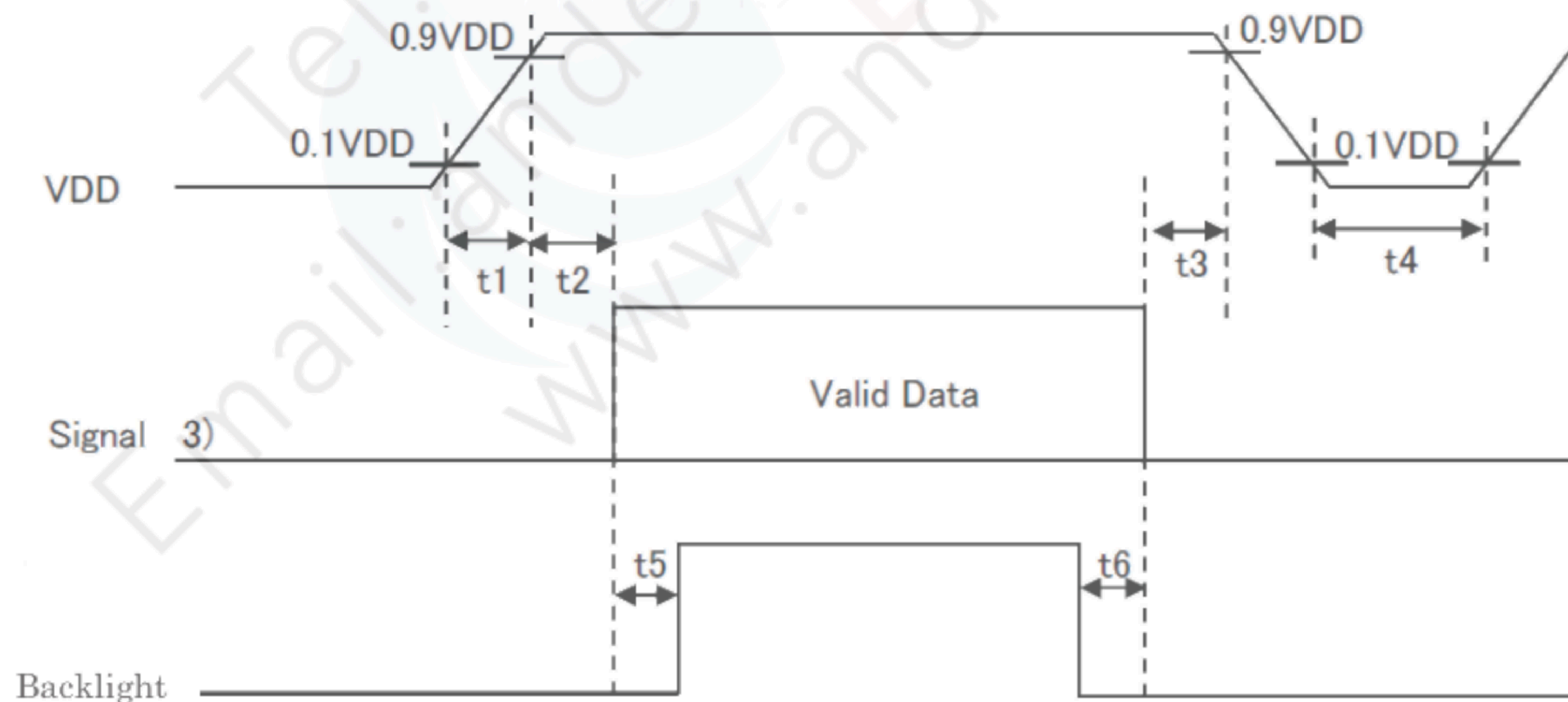
5. Electrical characteristics

5-1. LCD

Temp. = -30~80°C

Item	Symbol	Condition	Min.	Typ.	Max.	Unit
Supply voltage 1)	V_{DD}	-	3.0	3.3	3.6	V
Current consumption	I_{DD}	2)	-	480	550	mA
Permissive input ripple voltage	V_{RP}	$V_{DD}=3.3V$	-	-	100	mV
Input signal voltage 3)	V_{IL}	"Low" level	0	-	$0.3V_{DD}$	V
	V_{IH}	"High" level	$0.7V_{DD}$	-	V_{DD}	V
Input leak current	I_{OL}	$V_{I3}=0V$	-10	-	10	μA
	I_{OH}	$V_{I3}=3.3V$	-	-	400	μA
LVDS Input voltage 4)	V_L	-	0.2	-	2.2	V
Differential input voltage	V_{ID}	-	200	-	600	mV
Differential input threshold voltage 4) 5)	V_{TL}	"Low" level	$V_{CM}-100$	-	-	mV
	V_{TH}	"High" level	-	-	$V_{CM}+100$	mV
Terminator	R_1	-	-	100	-	Ω
V_{DD} -turn-on conditions 1) 6)	t_1	-	1.5	-	3	ms
	t_2	-	2	-	80	ms
	t_3	-	120	-	-	ms
	t_4	-	200	-	-	ms
	t_5	-	70	-	-	ms
	t_6	-	0	-	-	ms

1) V_{DD} -turn-on conditions



2) Display pattern:

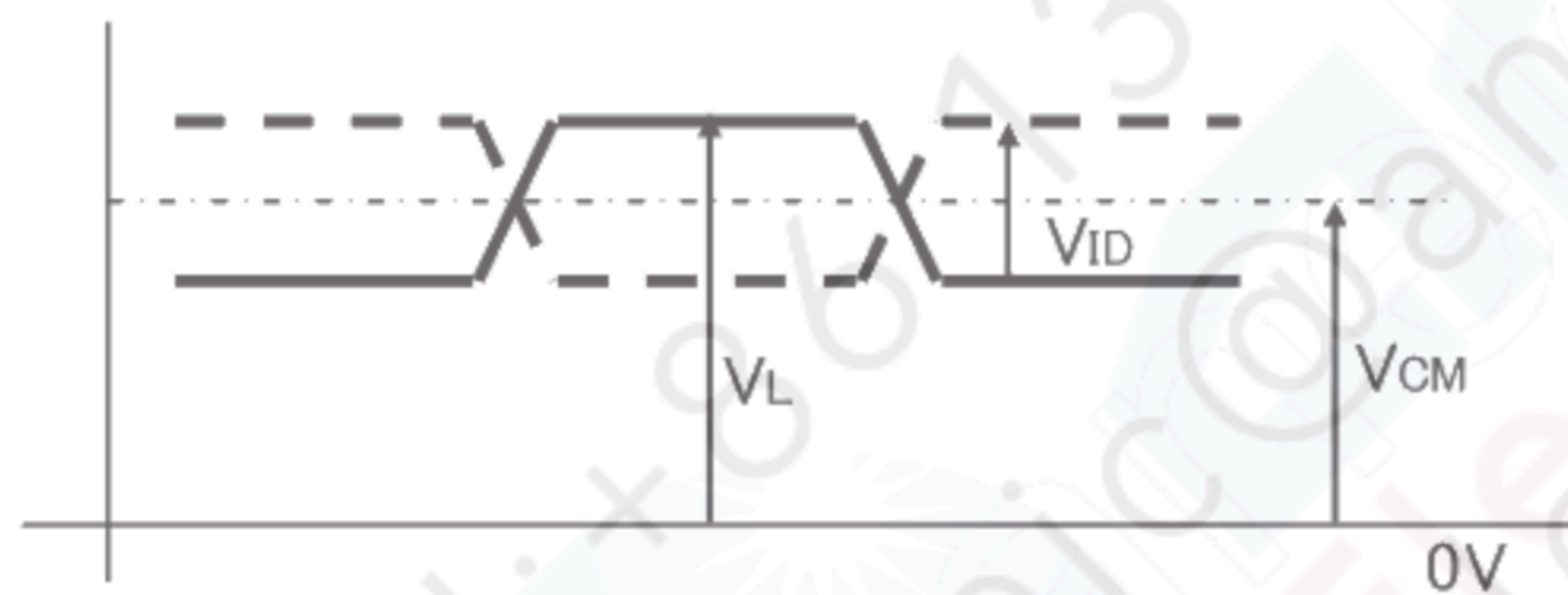
$V_{DD} = 3.3V$, Temp. = 25°C

123 456 3071 3072(dot)
 1 □□□□□□□□□□□□□□□□□□
 2 □□□□□□□□□□□□□□□□□□
 3 □□□□□□□□□□□□□□□□□□
 : □□□□□□□□□□□□□□□□□□
 : □□□□□□□□□□□□□□□□□□
 : □□□□□□□□□□□□□□□□□□
 767 □□□□□□□□□□□□□□□□□□
 768 □□□□□□□□□□□□□□□□□□
 (dot)

3) Input signal : MODE, SC

4) Input signal : RxIN3+, RxIN3-, RxIN2+, RxIN2-, RxIN1+, RxIN1-, RxIN0+, RxIN0-, CK IN+, CK IN-

5) V_{CM} : LVDS Common mode voltage ($V_{CM}=1.25V$)



6) Please power on LVDS transmitter at the same time as VDD, or LVDS transmitter should be powered on first.

6. Optical characteristics

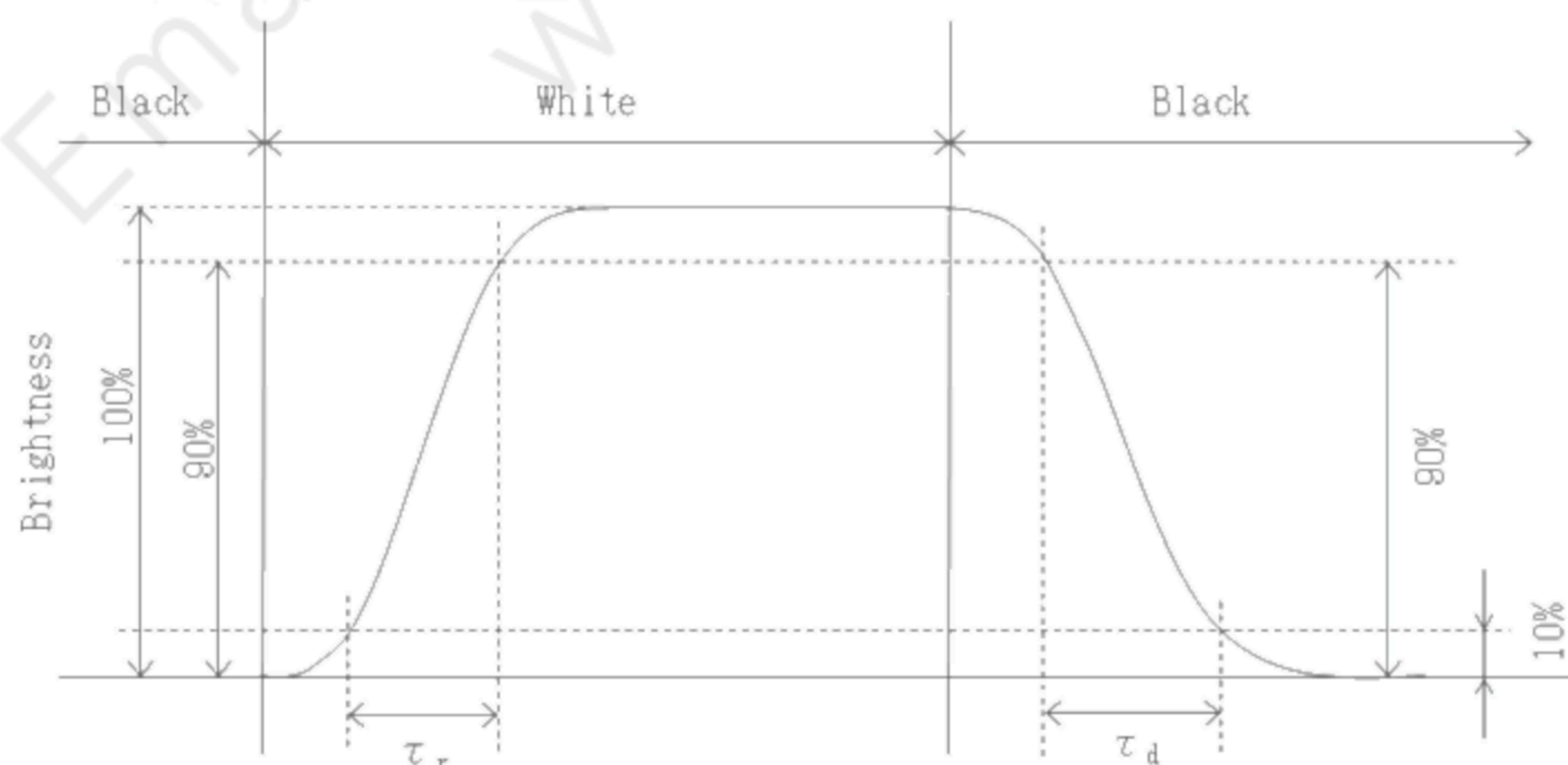
Measuring spot = $\phi 6.0\text{mm}$, Temp. = 25°C

Item		Symbol	Condition	Min.	Typ.	Max.	Unit
Response time	Rise	τ_r	$\theta=\varphi=0^{\circ}$	-	12	-	ms
	Down	τ_d	$\theta=\varphi=0^{\circ}$	-	11	-	ms
Viewing angle range View direction		θ_{UPPER}	$\text{CR} \geq 10$	-	85	-	deg.
		θ_{LOWER}		-	85	-	
		φ_{LEFT}		-	85	-	deg.
		ϕ_{RIGHT}		-	85	-	
Contrast ratio		CR	$\theta=\varphi=0^{\circ}$	390	600	-	-
Brightness		L	IF=100mA/Line	700	1,000	-	cd/m^2
Chromaticity coordinates	Red	x	$\theta=\varphi=0^{\circ}$	0.569	0.619	0.669	-
		y		0.306	0.356	0.406	
	Green	x	$\theta=\varphi=0^{\circ}$	0.236	0.286	0.336	
		y		0.529	0.579	0.629	
	Blue	x	$\theta=\varphi=0^{\circ}$	0.094	0.144	0.194	
		y		0.041	0.091	0.141	
	White	x	$\theta=\varphi=0^{\circ}$	0.253	0.303	0.353	
		y		0.274	0.324	0.374	

6-1. Definition of contrast ratio

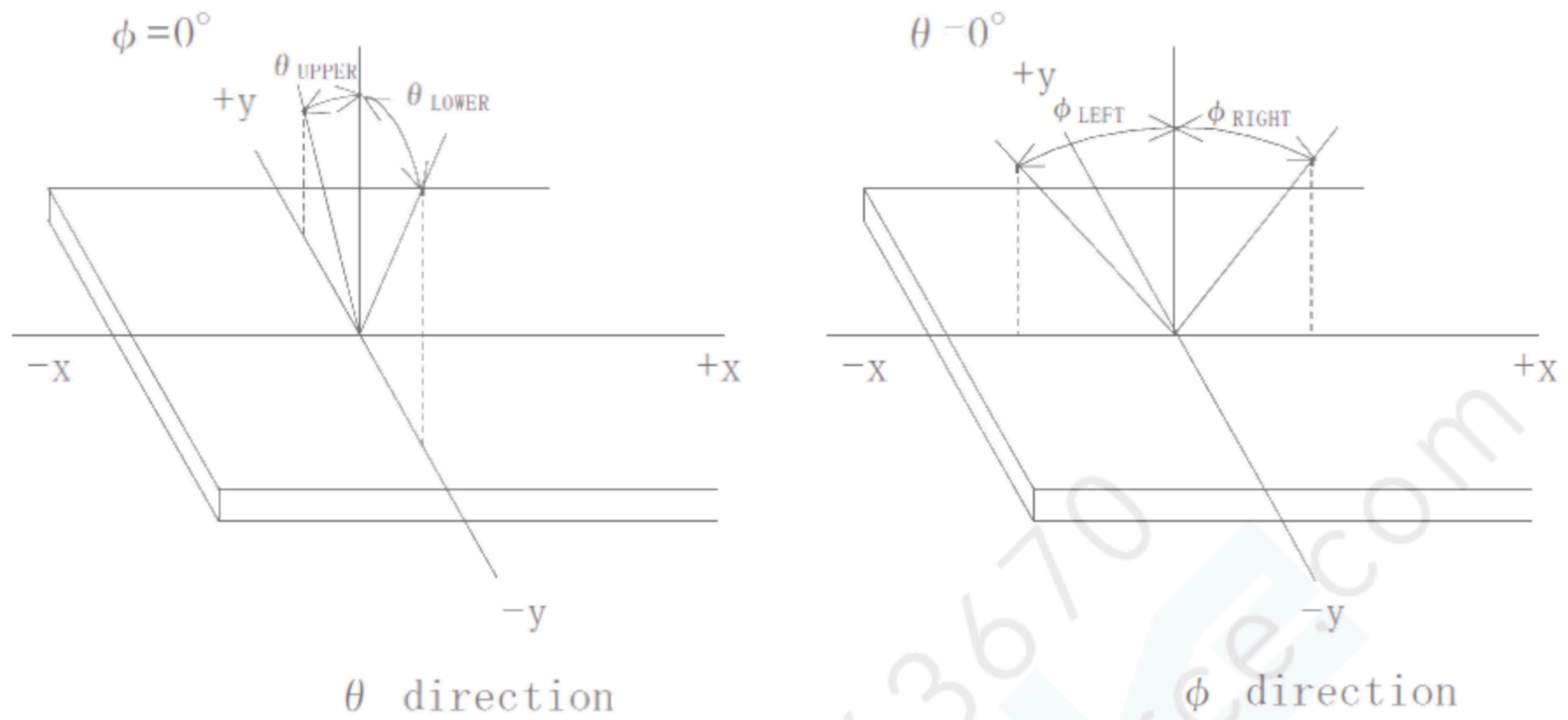
$$\text{CR(Contrast ratio)} = \frac{\text{Brightness with all pixels "White"}}{\text{Brightness with all pixels "Black"}}$$

6-2. Definition of response time

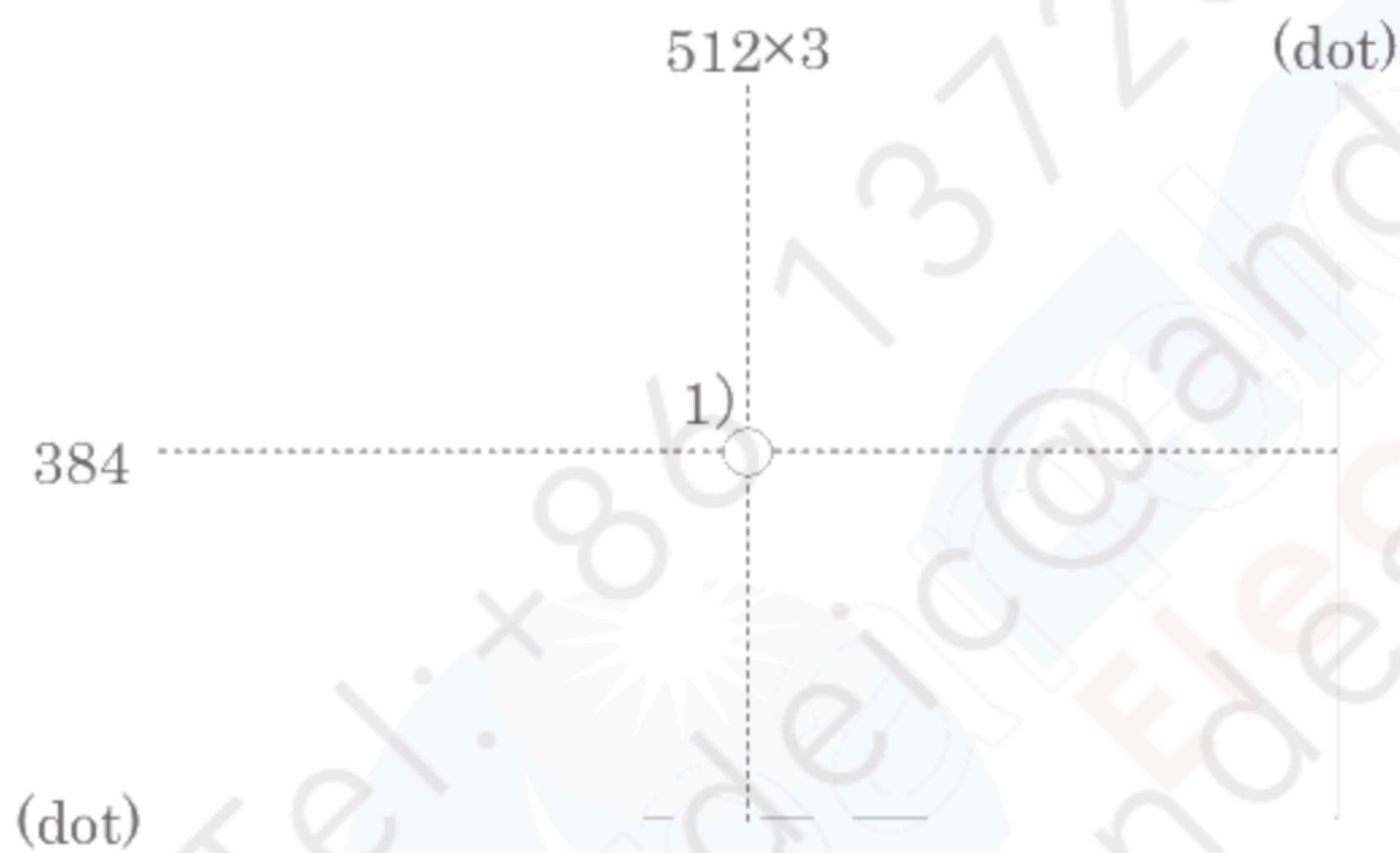


6-3. Definition of viewing angle

【FPC side】



6-4. Brightness measuring points



- 1) Rating is defined as the white brightness at center of display screen.
- 2) 5 minutes after LED is turned on. (Ambient Temp.=25°C)

7. Interface signals

7-1. Interface signals

No.	Symbol	Description	Note
1	V _{DD}	+3.3V power supply	
2	V _{DD}	+3.3V power supply	
3	GND	GND	
4	GND	GND	
5	RxIN0-	LVDS receiver signal CH0(-)	LVDS
6	RxIN0+	LVDS receiver signal CH0(+)	LVDS
7	GND	GND	
8	RxIN1-	LVDS receiver signal CH1(-)	LVDS
9	RxIN1+	LVDS receiver signal CH1(+)	LVDS
10	GND	GND	
11	RxIN2-	LVDS receiver signal CH2(-)	LVDS
12	RxIN2+	LVDS receiver signal CH2(+)	LVDS
13	GND	GND	
14	CK IN-	LVDS receiver signal CK(-)	LVDS
15	CK IN+	LVDS receiver signal CK(+)	LVDS
16	GND	GND	
17	RxIN3-	LVDS receiver signal CH3(-)	LVDS
18	RxIN3+	LVDS receiver signal CH3(+)	LVDS
19	MODE	Bit data select signal(GND: 6bit mode, High: 8bit mode)	
20	SC	Scan direction control(GND: Normal, High: Reverse)	1)

LCD connector : 20186-020E-11F (I-PEX)

Matching connector : 20197-020U-F (I-PEX)

20197-T20U-F (I-PEX)

LVDS receiver : Embedded in ASIC

Matching LVDS transmitter : THC63LVDM83D(THine Electronics) or compatible

1) Scanning

SC : GND



SC : High



7-2. LED

1)

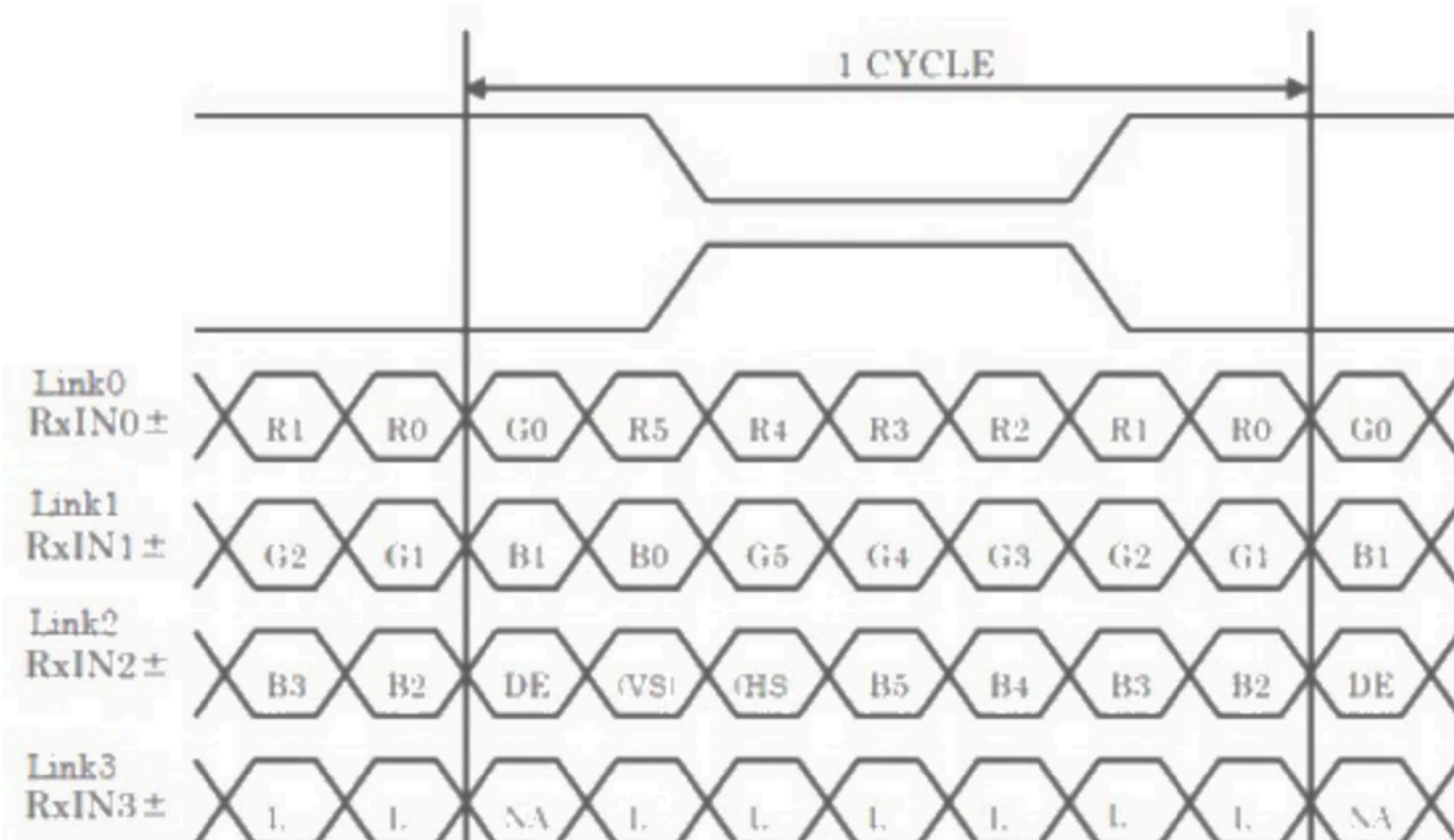
No.	Symbol	Description	Note
1	NC	No connect	
2	NC	No connect	
3	CA1	Cathode 1	
4	AN1	Anode 1	
5	AN2	Anode 2	
6	CA2	Cathode 2	

LCD connector : SM06B-SHLS-TF(LF)(SN) (JST)

Matching connector : SHLP-06V-S-B (JST)

7-3. Data mapping(6bit input)

MODE=L(GND)



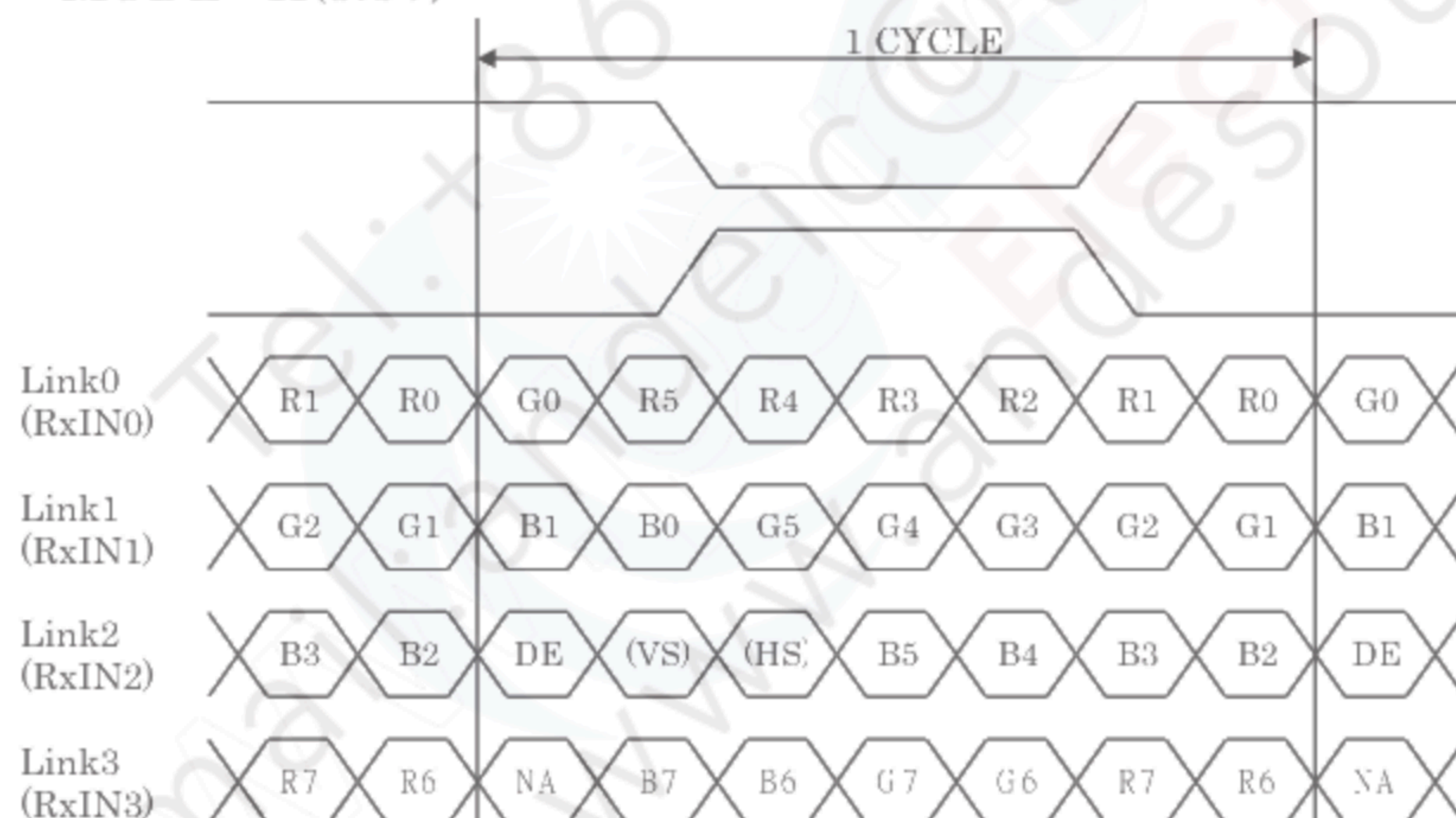
DE : DATA ENABLE

HS : H_{SYNC}

VS : V_{SYNC}

7-4. Data mapping(8bit input)

MODE= H(3.3V)



DE : DATA ENABLE

HS : H_{SYNC}

VS : V_{SYNC}

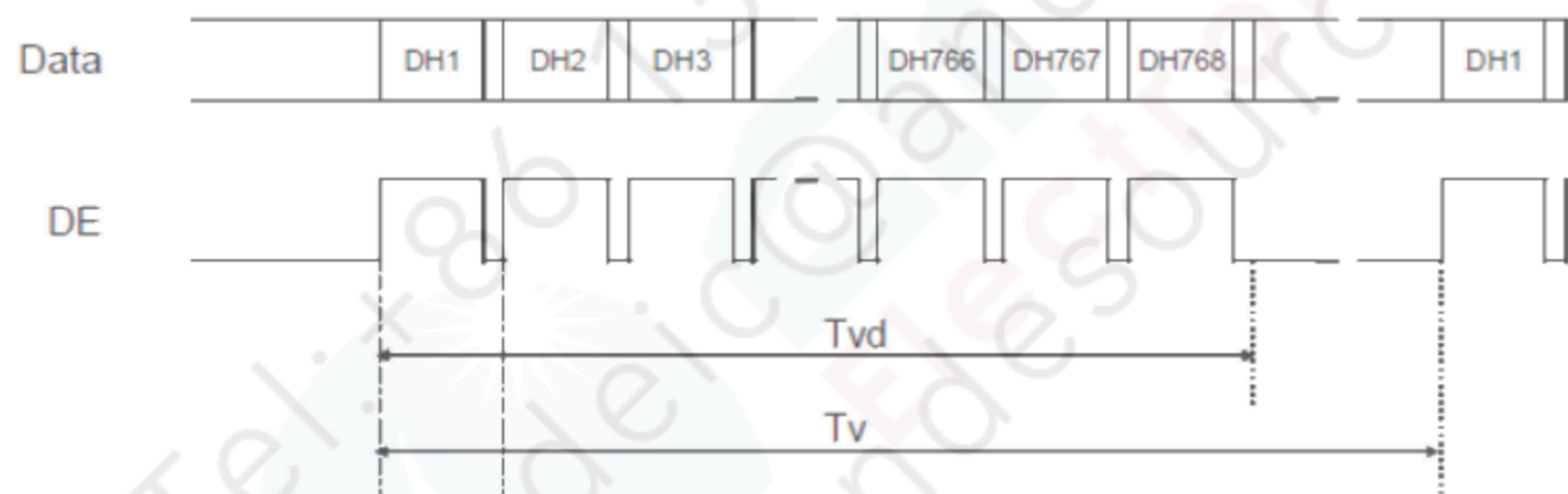
8. Input timing characteristics

8-1. Timing characteristics

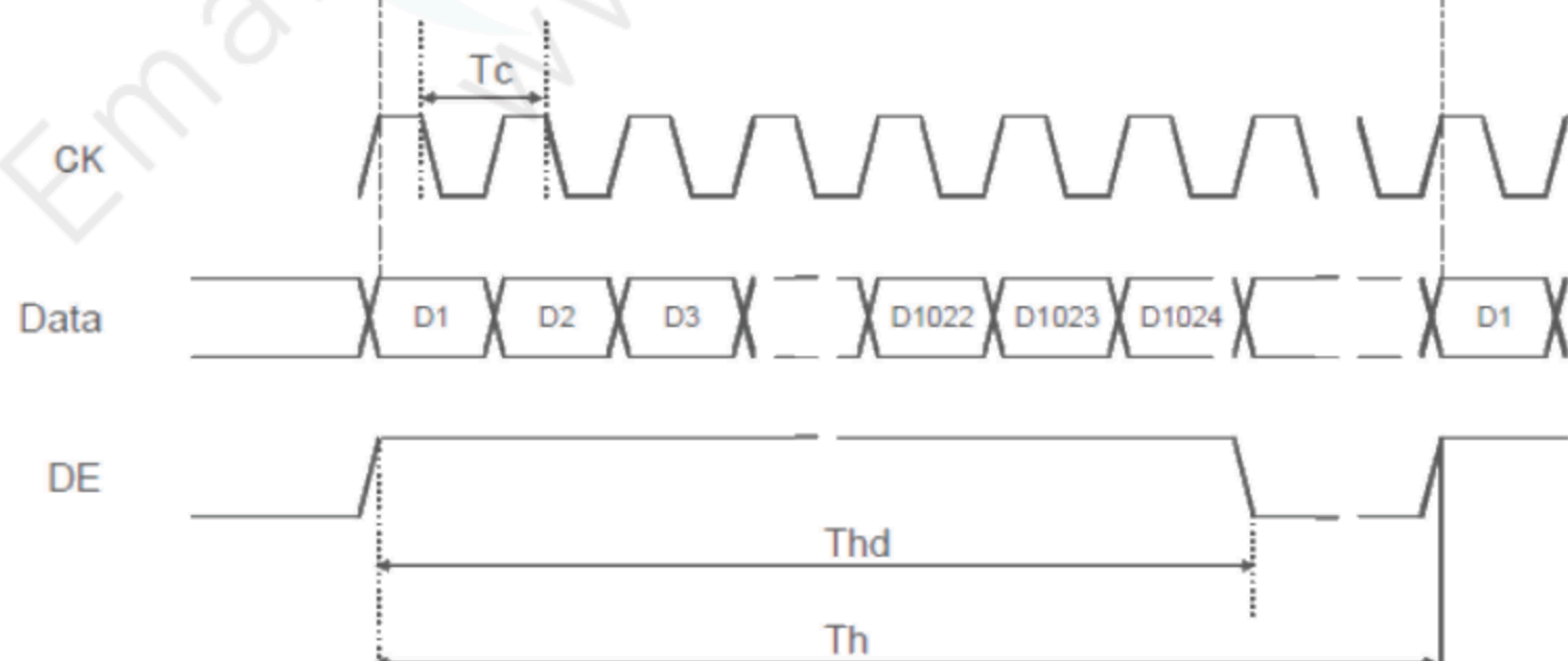
	Item	Symbol	Min.	Typ.	Max.	Unit	Note
Clock (CK)	Frequency	1/Tc	48.4	52.4	59.5	MHz	2)
Enable signal (DE)	Horizontal Period	Th	1,044	1,080	1,204	Tc	
			17.5	20.6	24.9	μs	
	Horizontal display period	Thd	1,024			Tc	
	Vertical Period	Tv	773	808	851	Line	
	Vertical display period	Tvd	768			Th	
Refresh rate		fv	55	60	68	Hz	3)

- 1) If the display is used under the condition which is out of specifications such as higher clock frequency than specified value, there is a possibility phenomenon such as display error including white display, malfunction and no image may occur.
- 2) Please set a clock frequency, a vertical dormant period, and the horizontal dormant period so that the Horizontal Period should not reach less than Min. value.
- 3) If the refresh rate reach less than Min. value, the deterioration of the display quality, flicker etc., may occur.(fv=1/Tv)

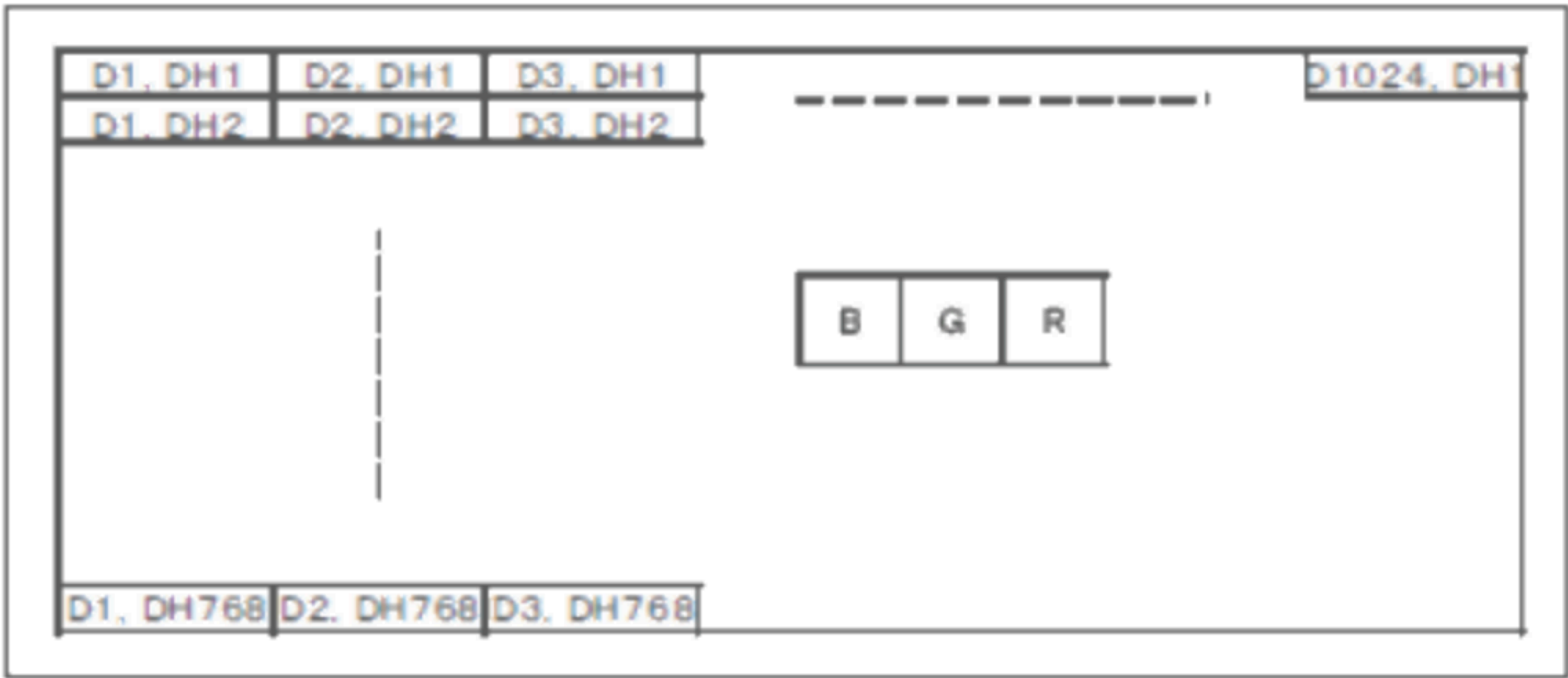
Vertical Timing Diagram



Horizontal Timing Diagram



8-2. Input Data Signals and Display position on the screen



9. Backlight characteristics

Item	Symbol	Min.	Typ.	Max.	Unit	Note
Forward current 1)	IF	-	100	-	mA	Ta=-30~80°C
Forward voltage 1)	VF	30.2	33.1	37.3	V	IF=100mA, Ta=-30°C
		28.8	31.8	35.9	V	IF=100mA, Ta=25°C
		28.1	31.1	35.2	V	IF=100mA, Ta=80°C
Operating life time 2), 3)	T	-	50,000	-	h	IF=100mA, Ta=25°C

1) For each "AN-CA"

2) When brightness decrease 50% of minimum brightness.

The average life of a LED will decrease when the LCD is operating at higher temperatures.

3) Life time is estimated data.(Condition : IF= (100) mA, Ta=25°C in chamber).

10. Lot number identification

The lot number shall be indicated on the back of the backlight case of each LCD.



TCG084XGLAAPNN-AN00-S: □□-□□



MADE IN



①



② ③ ④



⑤



⑥

No① – No⑥ above indicate

① Data matrix (For internal control purpose only)

(The items from Part No. to Version No. are included in data matrix.)

② Year code

③ Month code

② Year code: the last digit of the year

e.g. In case of 2022, year code: 2

③ Month code

Month	Jan.	Feb.	Mar.	Apr.	May	Jun.
Code	1	2	3	4	5	6

Month	Jul.	Aug.	Sep.	Oct.	Nov.	Dec.
Code	7	8	9	X	Y	Z

11. Warranty

11-1. Incoming inspection

Please inspect the LCD within one month after your receipt.

11-2. Production warranty

Kyocera warrants its LCD's for a period of 12 months from the ship date. Kyocera shall, by mutual agreement, replace or re-work defective LCD's that are shown to be Kyocera's responsibility.

12. Precautions for use

12-1. Installation of the LCD

- 1) A transparent protection plate shall be added to protect the LCD and its polarizer.
- 2) The LCD shall be installed so that there is no pressure on the LSI chips.
- 3) Since this product is wide viewing product, occurrence level of in-plane unevenness by the external stress is different compared to current normal viewing product. So there is a possibility that in-plane unevenness will be occurred by over twist, strain giving by attaching to LCD, and over pressure to touch panel. Please be careful of stress when designing the housing.
- 4) A transparent protection sheet is attached to the polarizer. Please remove the protection film slowly before use, paying attention to static electricity.

12-2. Static electricity

- 1) Since CMOS ICs are mounted directly onto the LCD glass, protection from static electricity is required.
- 2) Workers should use body grounding. Operator should wear ground straps.

12-3. LCD operation

- 1) The LCD shall be operated within the limits specified. Operation at values outside of these limits may shorten life, and/or harm display images.
- 2) Please select the best display pattern based on your evaluation because flicker, lines or nonuniformity or unevenness can be visible depending on display patterns.

12-4. Storage

- 1) The LCD shall be stored within the temperature and humidity limits specified.
Store in a dark area, and protect the LCD from direct sunlight or fluorescent light.
- 2) Always store the LCD so that it is free from external pressure onto it.

12-5. Usage

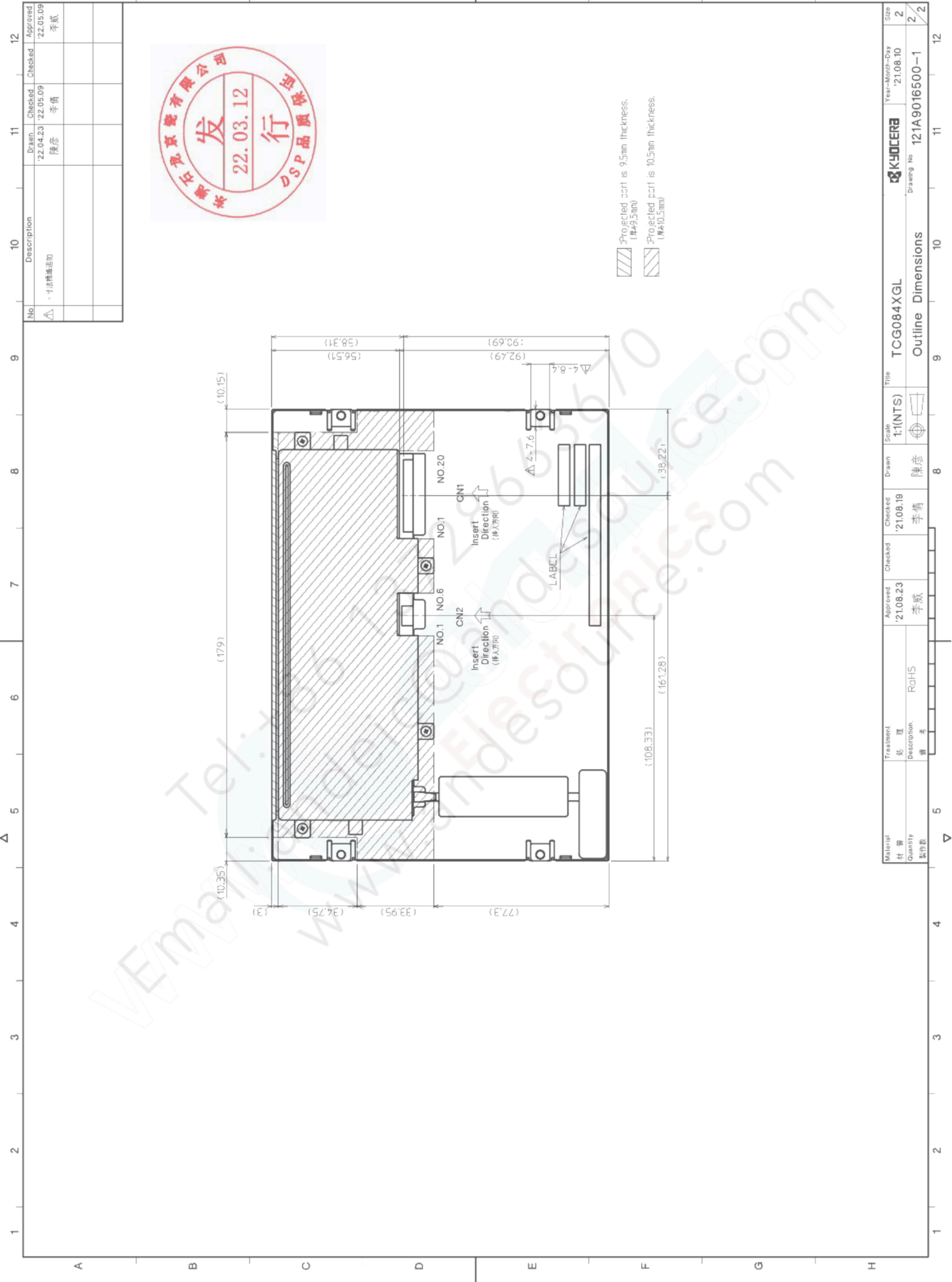
- 1) **DO NOT** store in a high humidity environment for extended periods. Polarizer degradation bubbles, and/or peeling off of the polarizer may result.
- 2) The front polarizer is easily scratched or damaged. Prevent touching it with any hard material, and from being pushed or rubbed.
- 3) The LCD screen may be cleaned by wiping the screen surface with a soft cloth or cotton pad using a little Ethanol.
- 4) Water may cause damage or discoloration of the polarizer. Clean condensation or moisture from any source immediately.
- 5) Always keep the LCD free from condensation during testing. Condensation may permanently spot or stain the polarizer.
- 6) Do not disassemble LCD because it will result in damage.
- 7) This Kyocera LCD has been specifically designed for use in general electronic devices, but not for use in a special environment such as usage in an active gas. Hence, when the LCD is supposed to be used in a special environment, evaluate the LCD thoroughly beforehand and do not expose the LCD to chemicals such as an active gas.
- 8) Please do not use solid-base image pattern for long hours because a temporary afterimage may appear. We recommend using screen saver etc. in cases where a solid-base image pattern must be used.
- 9) Liquid crystal may leak when the LCD is broken. Be careful not to let the fluid go into your eyes and mouth. In the case the fluid touches your body; rinse it off right away with water and soap.

13. Reliability test data

Test item	Test condition	Test time	Judgement
High temp. atmosphere	80°C	240h	Display function : No Defect Display quality : No Defect Current consumption : No Defect
Low temp. atmosphere	-30°C	240h	Display function : No Defect Display quality : No Defect Current consumption : No Defect
High temp. humidity atmosphere	40°C 90% RH	240h	Display function : No Defect Display quality : No Defect Current consumption : No Defect
Temp. cycle	-30°C 0.5h R.T. 0.5h 80°C 0.5h	10cycles	Display function : No Defect Display quality : No Defect Current consumption : No Defect
High temp. operation	80°C	240h	Display function : No Defect Display quality : No Defect Current consumption : No Defect

- 1) Each test item uses a test LCD only once. The tested LCD is not used in any other tests.
- 2) The LCD is tested in circumstances in which there is no condensation.
- 3) The reliability test is not an out-going inspection.
- 4) The result of the reliability test is for your reference purpose only.

The reliability test is conducted only to examine the LCD's capability.



No.	Description	Drawn	Checked	Year-Month-Day	Approved
1	尺寸精确定加	陈彦	李倩	'22.04.23	'22.05.09
2					
3					
4					
5					
6					
7					
8					
9					
10					
11					
12					

Material	Treatment	Approved	Checked	Scale	Title	Year-Month-Day	Size
材料	处理	'21.08.23	'21.08.19	1:1(NTS)	TCG084XGL	'21.08.10	2
Quantity	Description	数量	描述		Outline Dimensions	Drawing No	
製作数	RoHS	李威	李倩			121A9016500-1	2/2

Spec No.	Q-DS-2-S082-00
Date	2022.05.20

KYOCERA INSPECTION STANDARD

TYPE : TCG084XGLAAPNN-AN00-S



KYOCERA CORPORATION
DONGGUAN SHILONG KYOCERA Co.,Ltd.
DISPLAY DIVISION

Original Issue Date	Designed by : Engineering dept.			Confirmed by : QA dept.	
	Prepared	Checked	Approved	Checked	Approved
2022.05.20	Zheng Chuhao	Liang Shaojin Yamazaki	Shibano	Wang Wei	Chen Zhihua Suyama

Spec No. Q-DS-2-S082-00	Part No. TCG084XGLAAPNN-AN00-S	Page 2
----------------------------	-----------------------------------	-----------


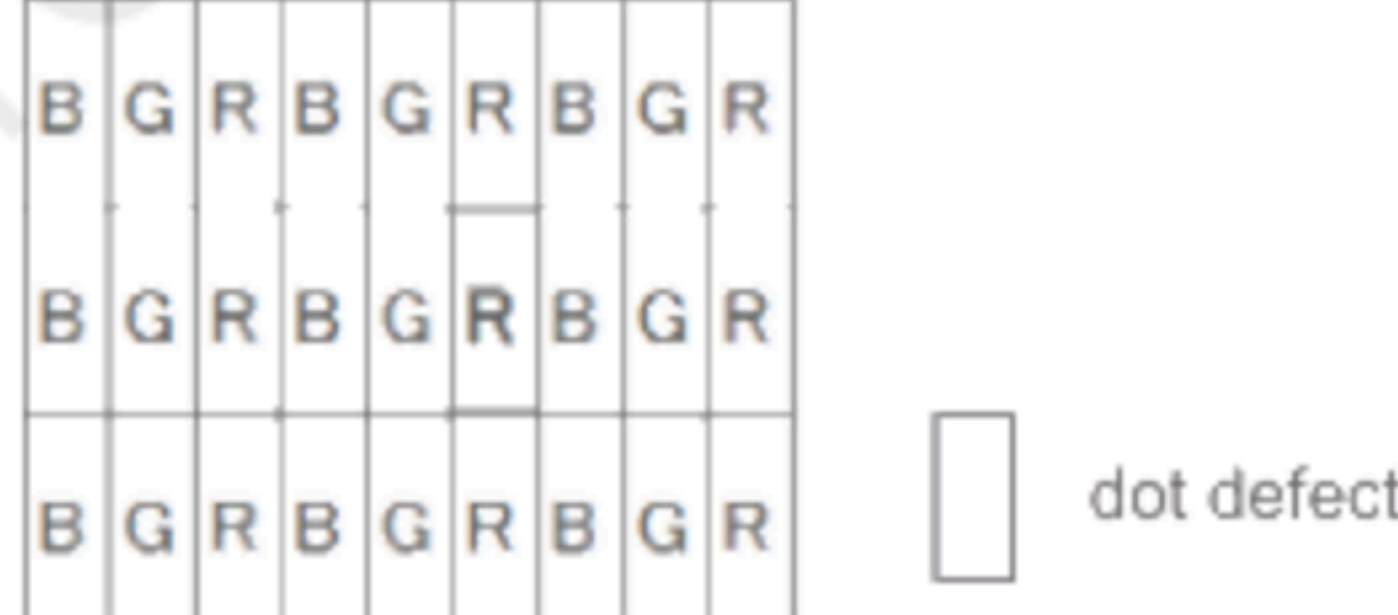
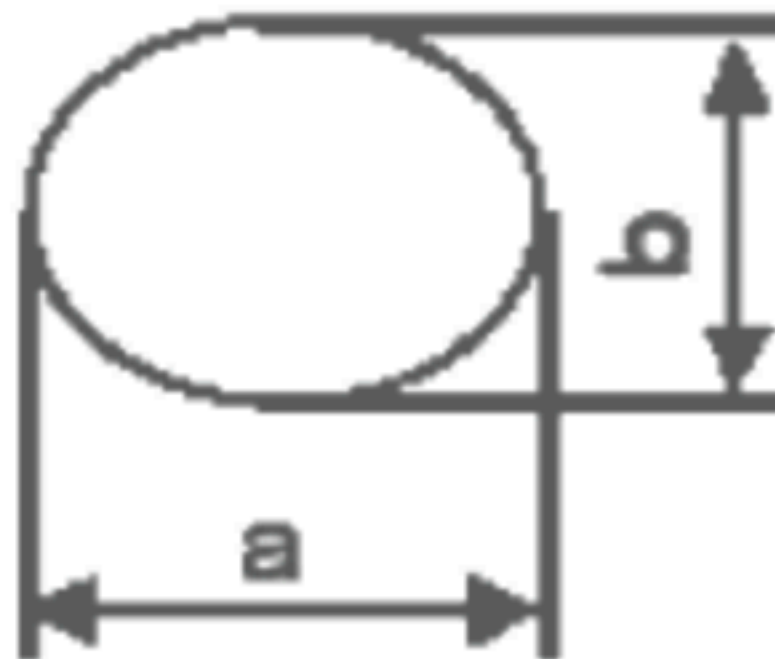
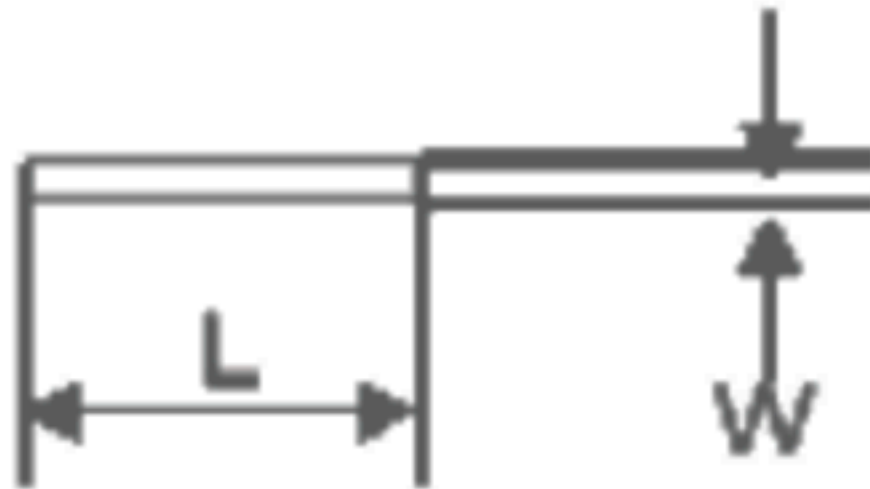
Revision record

Date	Designed by : Engineering dept.			Confirmed by : QA dept.	
	Prepared	Checked	Approved	Checked	Approved

Rev.No.	Date	Page	Descriptions

Visuals specification

1) Note

	Note		
General	<p>1. Customer identified anomalies not defined within this inspection standard shall be reviewed by Kyocera, and an additional standard shall be determined by mutual consent.</p> <p>2. This inspection standard about the image quality shall be applied to any defect within the active area and shall not be applicable to outside of the area.</p> <p>3. Inspection conditions</p> <p>Luminance : 500 Lux min.</p> <p>Inspection distance : 300 mm.</p> <p>Temperature : 25 ± 5°C</p> <p>Direction : Directly above</p>		
Definition of inspection item	Dot defect	Bright dot defect	<p>The dot is constantly “on” when power applied to the LCD, even when all “Black” data sent to the screen.</p> <p>Inspection tool: 5% Transparency neutral density filter.</p> <p>Count dot: If the dot is visible through the filter.</p> <p>Don't count dot: If the dot is not visible through the filter.</p> 
		Black dot defect	<p>The dot is constantly “off” when power applied to the LCD, even when all “White” data sent to the screen.</p> <p>Similar size compared to bright dot.</p>
		White dot (Circular/foreign particle)	<p>Pixel works electrically, however, circular/foreign particle makes dot appear to be “on” even when all “Black” data is sent to the screen.</p>
		Adjacent dot	<p>Adjacent dot defect is defined as two or more bright dot defects or black dot defects.</p> 
	External inspection	Bubble, Scratch, Foreign particle (Polarizer, Cell, Backlight)	Visible operating (all pixels “Black” or “White”) and non operating.
		Appearance inspection	Does not satisfy the value at the spec.
	Others	LED	Damaged to the LED, connector, pin, functional failure or appearance failure.
Definition of size	Definition of circle size		Definition of linear size
	 <p>$d = (a + b) / 2$</p>		

2) Standard

Classification		Inspection item		Judgement standard		
Defect in active area (in LCD glass)	Dot defect	Bright dot defect		Acceptable number : 4 Bright dot spacing : 5 mm or more		
		Black dot defect		Acceptable number : 5 Black dot spacing : 5 mm or more		
		2 dot join	Bright dot defect	Acceptable number : 2		
			Black dot defect	Acceptable number : 3		
		3 or more dots join		Acceptable number : 0		
		Total dot defects		Acceptable number : 5 Max		
	Others	White dot, Dark dot (Circle)				
				Size (mm)		Acceptable number
d ≦ 0.2				(Neglected)		
0.2 < d ≦ 0.4				5		
0.4 < d ≦ 0.5				3		
0.5 < d				0		
External inspection in active area (Defect on Polarizer or between Polarizer and LCD glass)		Polarizer (Scratch)				
				Width	Length (mm)	Acceptable
				W ≦ 0.1	—	(Neglected)
				0.1 < W ≦ 0.3	L ≦ 5.0	(Neglected)
					5.0 < L	0
				0.3 < W	—	0
		Polarizer (Bubble)				
				Size (mm)	Acceptable number	
				d ≦ 0.2	(Neglected)	
				0.2 < d ≦ 0.3	5	
				0.3 < d ≦ 0.5	3	
				0.5 < d	0	
		Foreign particle (Circular shape)				
				Size (mm)	Acceptable number	
				d ≦ 0.2	(Neglected)	
				0.2 < d ≦ 0.4	5	
				0.4 < d ≦ 0.5	3	
				0.5 < d	0	
Foreign particle (Linear shape) Scratch						
		Width (mm)	Length (mm)	Acceptable		
		W ≦ 0.1	—	(Neglected)		
		0.1 < W ≦ 0.2	L ≦ 2.0	(Neglected)		
			2.0 < L ≦ 5.0	3		
			5.0 < L	0		
		0.2 < W	—	(According to circular shape)		